

#mentalhealthawarenessweek



# Welcome to Pishiobury Park's Nature Trail



## Welcome to Pishiobury Park

You are in the main car park, the starting point of the tour.

Use this sheet and the accompanying map to find your way around the park.

## Longhorn cattle

At some point in your tour, you will almost certainly encounter Longhorn cattle. Treat them with respect and appreciate the great grazing job they are doing across the park.



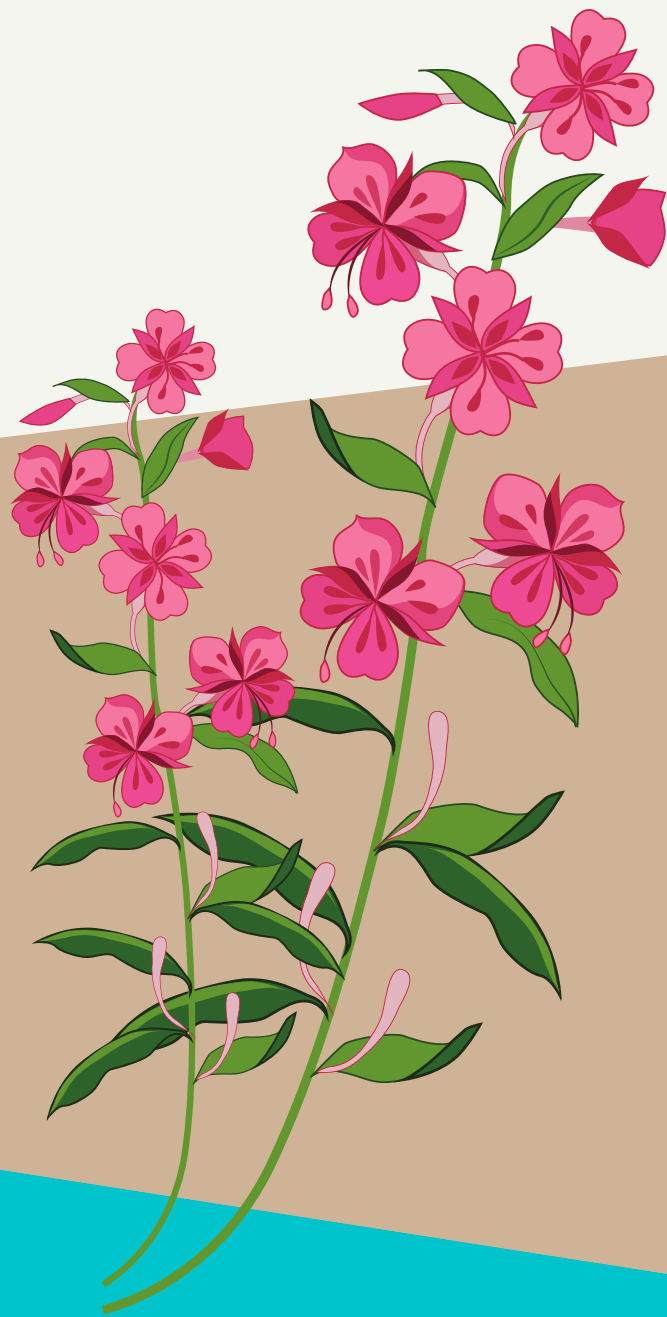
## Point 1

Leave the car park and find your way to point 1. This is Lime Walk, which was an ornamental feature of the 18th-century park.

Look for common lime and clumps of mistletoe.

#mentalhealthawarenessweek

# take a moment...



## Point 2

Continue walking over the bridge and ditch to point 2, the freshwater spring.

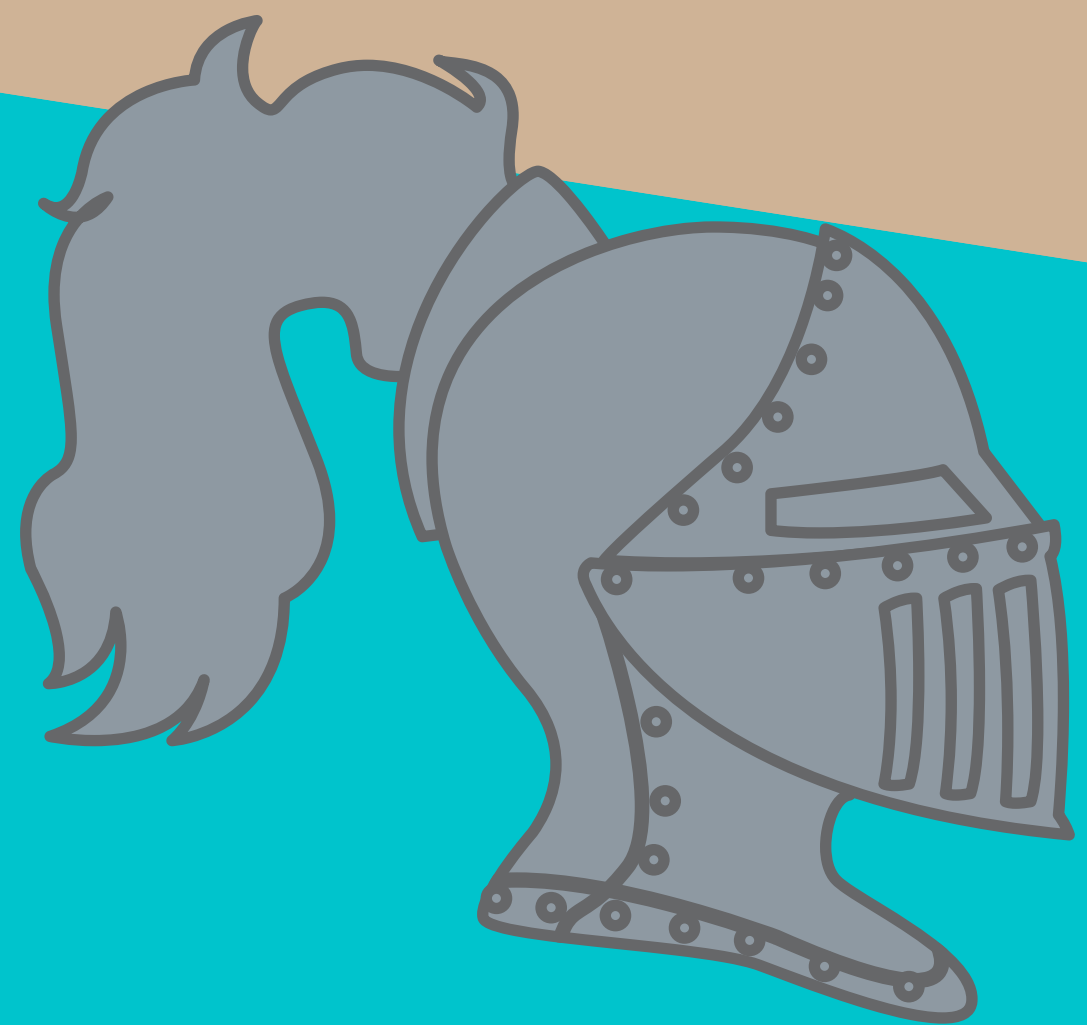
Look for reed mace, willow herb and goat willow.

## Point 3

Head on to point 3, going over several banks and ditches which are almost certainly medieval field boundaries.

Through the trees you can catch a glimpse of Pishiobury House, which was the centre-piece for the 18th-century park and estate.

Read the information noticeboard by the entrance gate.



## Point 4

Now walk north to point 4. This is the start of Oak Walk which was one of the original approach avenues to Pishiobury House.

Look for horse chestnut, ash and oak trees.





#mentalhealthawarenessweek

# absorb your surroundings...



## Point 5

Where the walk bends is point 5. Find and look at the plinth with its ceramic decoration.

In front of you is the sweep of the park which is called a vale. This is the best site for wild flowers.

In June and July look for dwarf thistle, bird's-foot trefoil, lady's bedstraw and salad burnet.

## Point 6

Continue walking north along Oak Walk to point 6.

You will pass some very old oak trees on the left which are almost certainly pollards. They are early 18th-century plantings.



## Point 7

Continue walking north until you find the lightning strike oak which is point 7.

See the split from top to bottom which happened many years ago.



#mentalhealthawarenessweek

# take it all in...



## Point 8

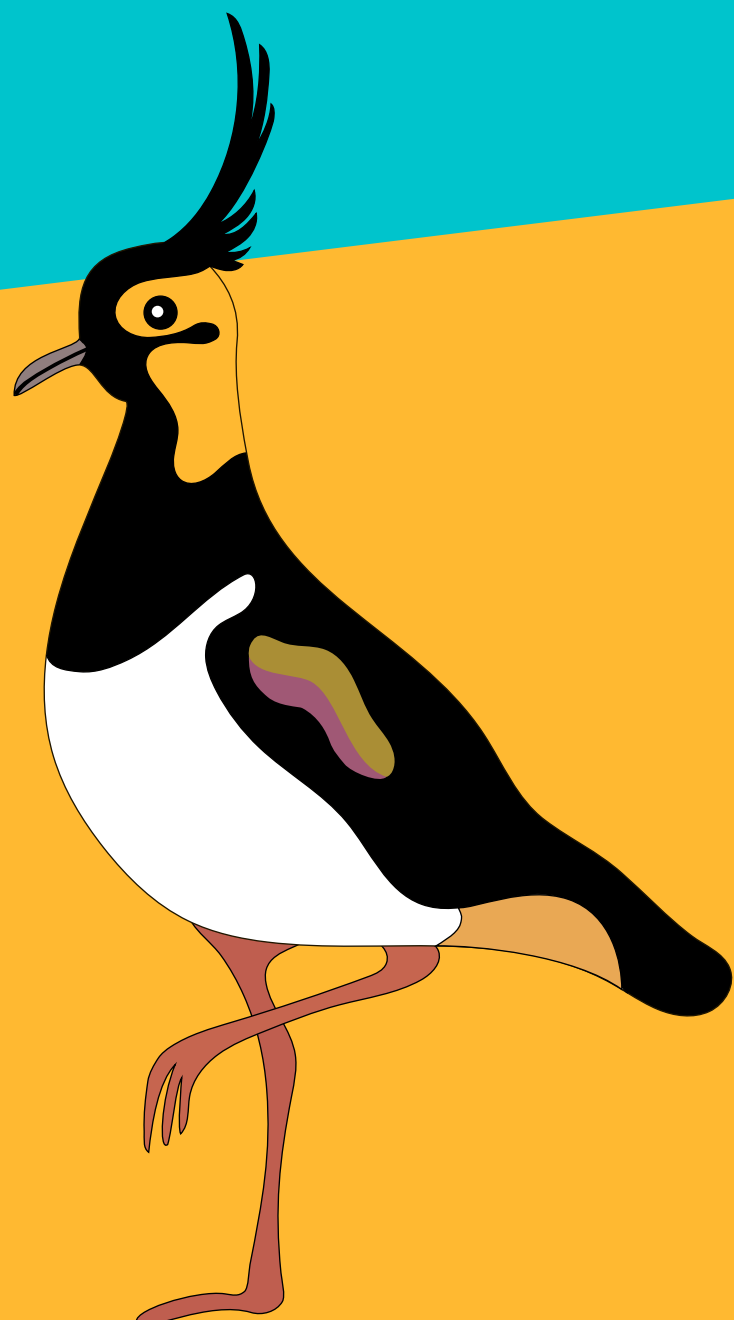
Now turn east and note point 8 which is a shallow hollow. It is possible that this is a pingo, developed at the end of the last Ice Age.

## Point 9

When you get to the old gravel pit, look down the park and find the entrance to the boardwalk which is Point 9.

The boardwalk goes down through the osier bed. This is a very special high biodiversity wet woodland.

At the bottom of the boardwalk read the information noticeboard.



## Point 10

Follow the boardwalk until you reach the open field at point 10. This field is Plovers Mead. Plovers are a family of bird species, including the attractive lapwing.

At the far side of the field you can see a veteran black poplar tree.



#mentalhealthawarenessweek

# take your time...



## Point 11

Now turn left and find the entrance to the lane which leads out of the park at point 11.

The lane is a holloway. It has developed through centuries of movement of vehicles and cattle.

Look for small-leaved elm and wild rose.

## Point 12

At the crossing point look out over the grassy field at point 12.

This is the site of a Neolithic causewayed enclosure and is a protected site.



## Point 13

Now turn back and enter Nursery Wood at point 13.

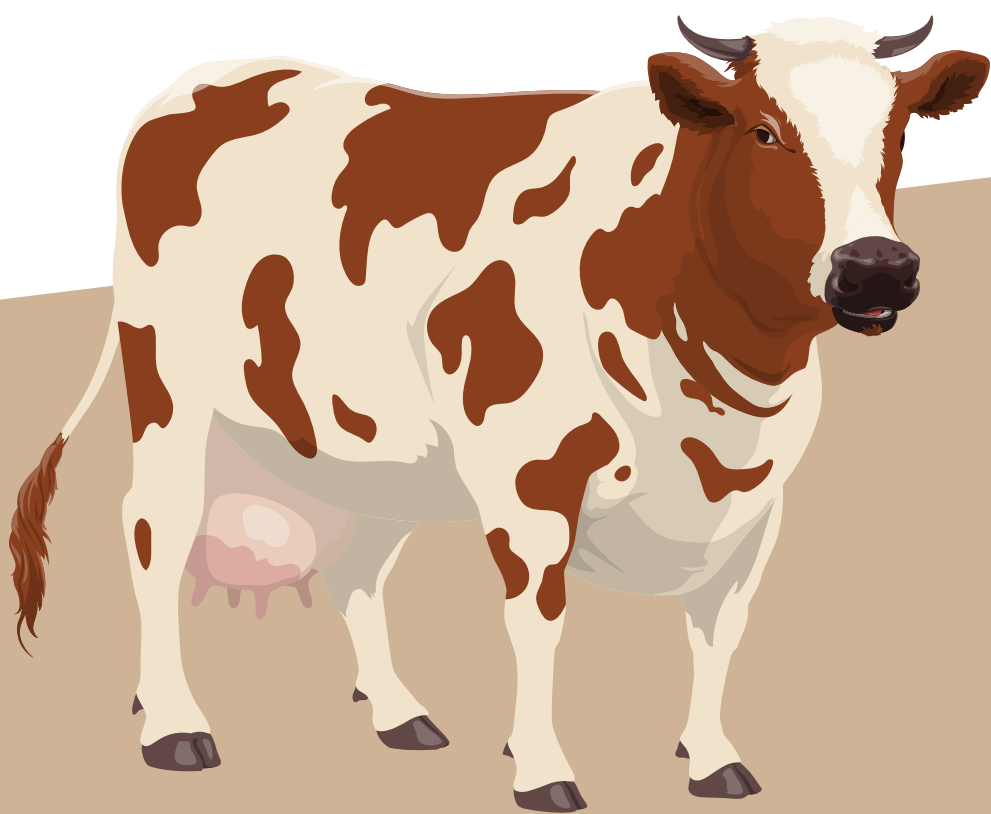
The wood gets its name from Thomas Rivers' nursery business, which is situated nearby. Walk up through the wood.

Find young hornbeam and cherry trees as you walk along the path.



**#mentalhealthawarenessweek**

**and breathe...**



### Point 14

**Find the cattle trough at point 14. This was historically one of the main entry points to the park.**

### Point 15

**Walk across the park and find the entrance to the field maple belt at point 15.**

**Before going through the gate, look out for the young cedar of Lebanon on the left.**



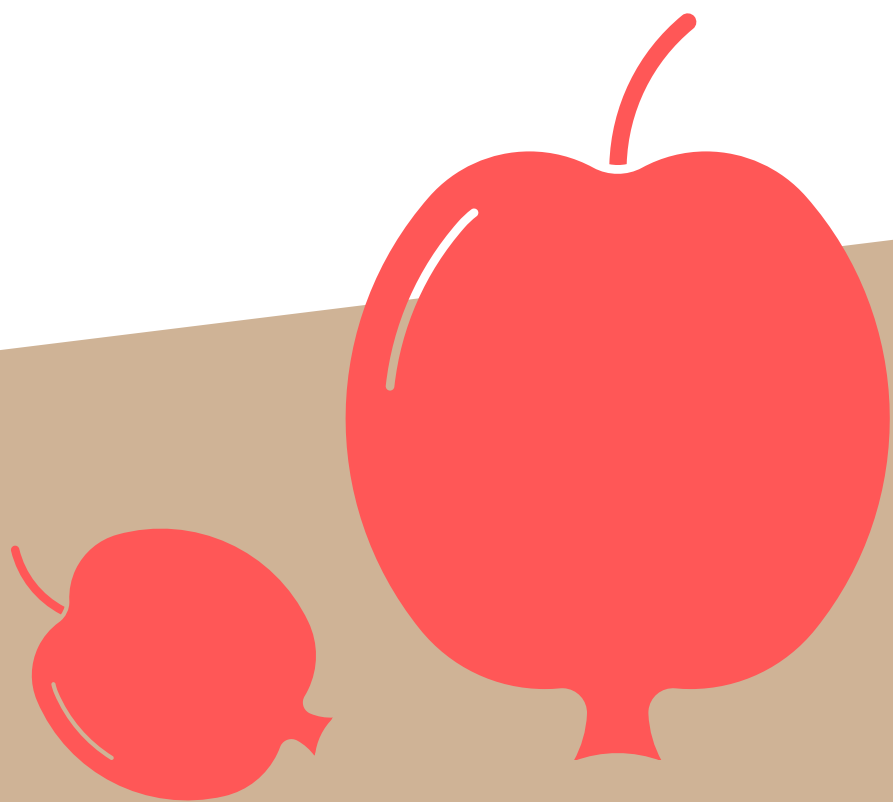
### Point 16

**Follow the woodland path through the maple belt until the trees change and you get nearer to the main road at point 16.**

**This is the oldest woodland on the park and is a hornbeam coppice, which was probably growing here before 1700.**

#mentalhealthawarenessweek

**enjoy the space...**



### Point 17

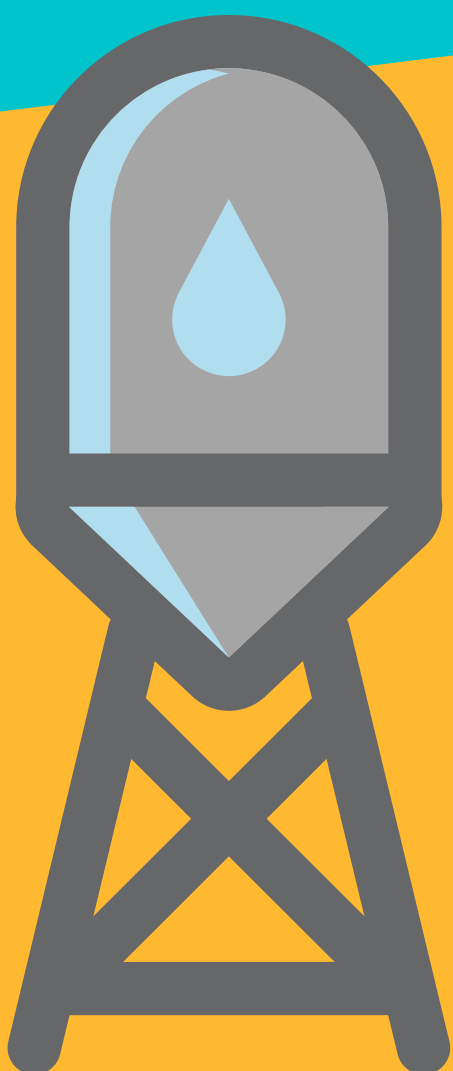
**Follow the woodland path to the west gate at point 17.**

**Find the old crab apple tree. This is not something that would normally be planted, so how did it get there?**

### Point 18

**Go back out onto the park through the gate.**

**Keep an eye open for common lizards and butterflies at point 18 in amongst the bramble patch if the sun is shining.**



### Point 19

**As you make your way back to the car park look in the up ahead of you and appreciate the view at point 19.**

**Can you identify the concrete structure in the distance?**



#mentalhealthawarenessweek

**thank you for coming**



**Point 20**

Finish your tour by going into the picnic area at point 20.

Have some refreshments on the picnic benches and enjoy the carved wooden cow!

**The Friends of Pishiobury Park hope you have enjoyed the nature trail.**

**To find out more about the Friends of Pishiobury Park visit [www.friendsofpishioburypark.co.uk](http://www.friendsofpishioburypark.co.uk)**







# Nature Trail Map



## Legend

	Amenity grassland		River
	Boardwalk		Roundel
	Car park		Scrub
	Cattle exclusion		Wetland
	Desire line		Wet woodland
	Grazed pasture		Woodland
	Oak walk		Woodland walk